

**PANCHSHEEL PUBLIC SCHOOL**



***CURIOUS MINDS - IV***  
***TERM - 1***



# **INDEX**

## **TERM 1**

### **UNIT 1 VARIATIONS WITH VOCABULARY**

#### **a. VAPORY VOWELS**

### **UNIT 2 STRIDES WITH SCIENCE**

#### **a. MEET THE DOCTORS**

### **UNIT 3 NUMERICAL NOTATIONS**

#### **a. SHAPES**

### **UNIT 4 INFORMATION TECHNOLOGY**

#### **a. INTERNET**

### **UNIT 5 SPORTS**

#### **a. FAMOUS INDIAN SPORTS (PART-1)**

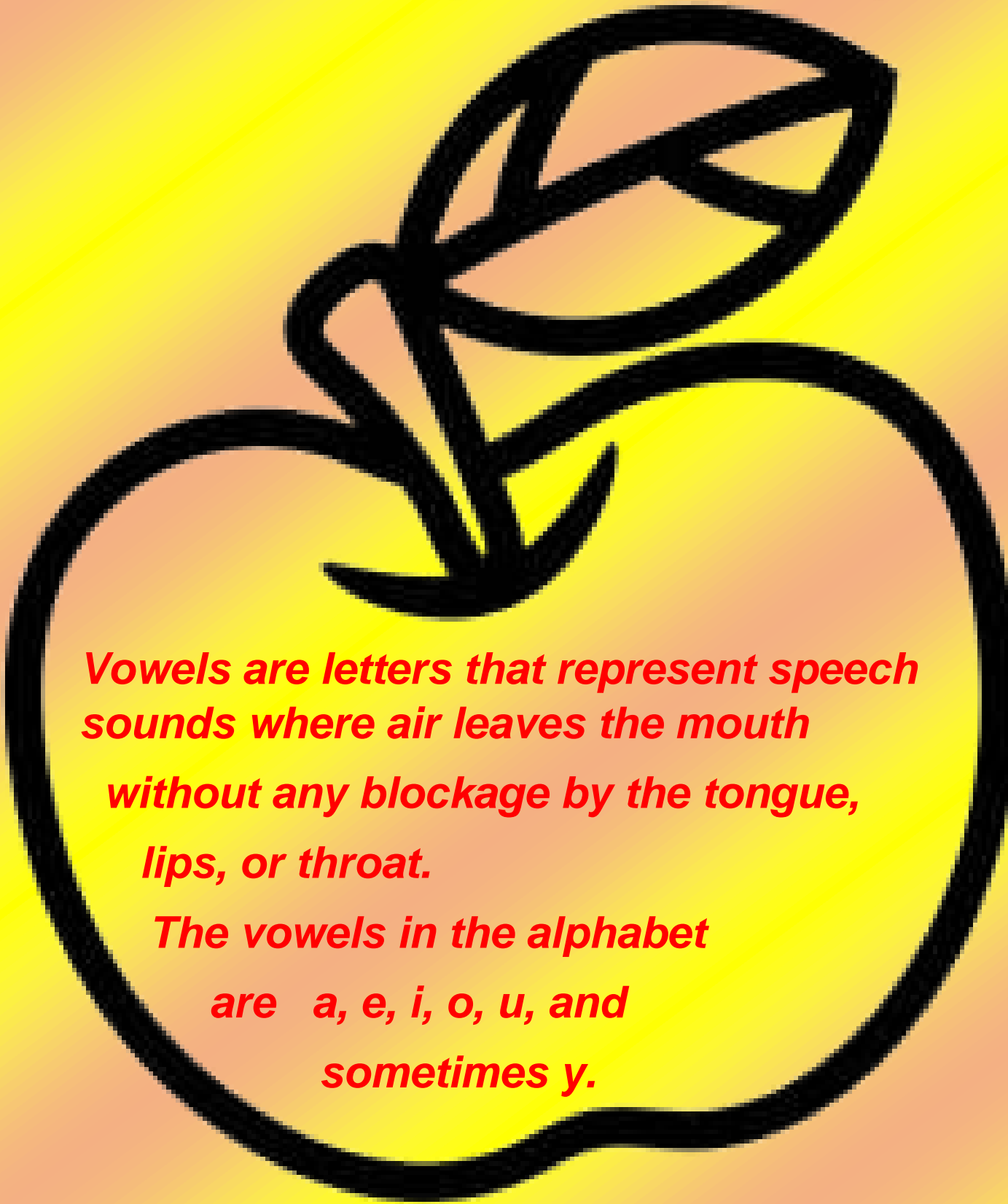
### **UNIT 6 ARCHIVAL EXPLORATION**

#### **a. INDIA- PHYSICAL FEATURES - 1**

VARIATIONS WITH VOCABULARY



# VAPORY VOWELS



*Vowels are letters that represent speech sounds where air leaves the mouth without any blockage by the tongue, lips, or throat.*

*The vowels in the alphabet are a, e, i, o, u, and sometimes y.*

# FUN FACTS



- The vowels are A, E, I, O, U and Y can be both vowel and consonant.
- Y is considered a vowel if the word has no vowels  
Eg: My, gym, By
- The letter is at the end of a word  
Eg: Candy, Deny, Bicycle
- Y is considered consonant when it starts off a word or syllable  
Eg: Yard, Lawyer, Beyond.
- All words need a vowel. Eg: Nap.kin, Di.sh, Ani.mal
- A long vowel says its own name. Eg: snake, Lake, Bake
- Every syllable needs a vowel. Eg: Hi.ppo.pota.mus, mo.un.tain
- When a syllable ends in a vowel the vowel is usually long. (be, he, me, no).
- When two vowels are together, the first one is long and the second is silent  
Eg. Bean, coat, boat.
- In words that contain only one vowel, that vowel is usually short.  
Eg: dog, cat, stick
- Two consonants together make only one sound.  
Eg: ch, sh, ph
- Double consonants make one sound.  
Eg: happy, pass, daddy, kiss
- Rules do not work hundred percent of time, and there are always exemptions.



# PATTERN IN VOWELS

## Spelling Patterns for Long Vowels

Long A	Long E	Long I	Long O	Long U
a at the end of a syllable  table	e at the end of a syllable  emu	i at the end of a syllable  tiger	o at the end of a syllable  pony	u at the end of a syllable  music
a_e cake 	ea peach 	i_e bike 	o_e nose 	u_e mule 
ai train 	ee sheep 	igh knight 	oa goat 	Other Patterns
ay spray 	ey monkey 	i followed by two consonants child 	ow window 	eu - fe <u>u</u> d ew - fe <u>w</u> ue - arg <u>u</u> e
eigh eight 	y puppy 	y fly 	o followed by two consonants gold 	
Other Patterns	Other Patterns	Other Patterns	Other Patterns	
ea - ste <u>a</u> k ei - ve <u>i</u> n ey - the <u>y</u>	e_e - the <u>s</u> e ei - ce <u>i</u> ling ie - sh <u>i</u> eld i - ra <u>d</u> io	ie - pi <u>e</u>	oe - to <u>e</u> oo - do <u>o</u> r ou - so <u>u</u> l ough - tho <u>u</u> gh	

# TEST YOUR KNOWLEDGE

## Long and Short Vowels

Select whether each word has a long vowel or a short vowel sound



cake

long a

short a



hive

long i

short i



egg

long e

short e



rope

long o

short o



apple

long a

short a



umbrella

long u

short u



pig

long i

short i



seal

long e

short e



orange

long o

short o

# RIDDLES

**WHAT 7 LETTER WORD  
BECOMES LONGER WHEN  
THE THIRD LETTER IS  
REMOVED  
THE CRYING ALPHABET?**



# MEET THE DOCTORS

Doctors also known as physicians, are licensed professionals trained to keep the people healthy and to heal the sick. Doctors diagnose disease, provide treatment, counsel patients with injuries, disease or illness. There are several shorts of doctors each specializing in a certain disease or part of the body. let's study about the various kinds of doctors and the field they deal with:

1. **Dentist**- A health professional who takes care of our teeth and gums.



2. **Cardiologist**- A doctor who specializes in treating heart diseases.



3. **Pediatrician**- A doctor who deals with the diseases in children

4. **Dermatologist**- A doctor who treats skin diseases.

5. **Neurologist**- A doctor who specializes in the diagnosis and treatment of the diseases that affect the nervous system (brain, spinal cord and nerves)

6. **Hematologist**- A doctor who has special training in diagnosing and treating blood.

7. **Psychiatrist**- A doctor who is trained to treat people with mental illness.

8. **Veterinarian**- A person who deals with sick Animals.



9. **Radiologist**- Radiologists are medical doctors that specializes in diagnosing and treating injuries and diseases using medical imaging radiology such as X-rays, MRI, ultrasound etc.



**10. Oncologist**-A doctor who has special training in diagnosing and treating cancer.



## AMAZING FACTS

➔ An Octopus has three hearts. One pumps blood around the body and the other two pumps blood to the gills.

➔ Nitrous oxide is known as laughing gas, clinically used as a safe anesthesia and appreciated for its anti-anxiety effect.



➔ Human body has two lungs. Both the lungs are of different size.

➔ The left lung is slightly smaller as allowing room for our heart.

Our taste buds seem to change throughout our lives. But by the age of 60, the average persons have lost their half taste buds. That is why older people don't seem to care as much about bitter or unusual tastes.

➔ Chimpanzee is the most intelligent mammal on earth after human.

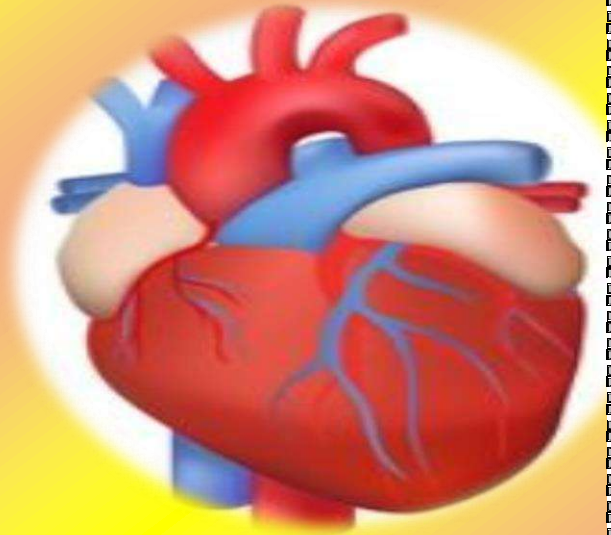
➔ Your fingerprints aren't the only part of your body which are completely unique to you. Your tongue also has a unique pattern.

➔ An adult, inhales about 6L of air per minute.

➔ A human heart can beat even when it is removed out of the body.

➔ A total of 80% of your body heat is lost through your head. That's why in winter it's necessary to cover the head with a woollen cap.

➔ The two kidneys together filter 180 litres of blood in 24 hours.



## TEST YOUR KNOWLEDGE

### HELP BOX

Endoscope camera,  
Electrocardiograph machine, MRI scan  
Stethoscope, sphygmomanometer,  
ultrasound machine

**Q1: Identify the instrument used in medical science:**

1. Used to listen heartbeat. ....

2. Used to send sound waves through the body to study the organs inside.

.....





3. Used to measure blood pressure

.....

4. Used to measure the rate and regularity of heartbeats, and to detect damage to the heart.

---



5. It uses strong Magnetic field to take pictures of the inside of the body.

.....

**Q2: Match the doctors to the treatment of the area they specialise in the columns given below:**

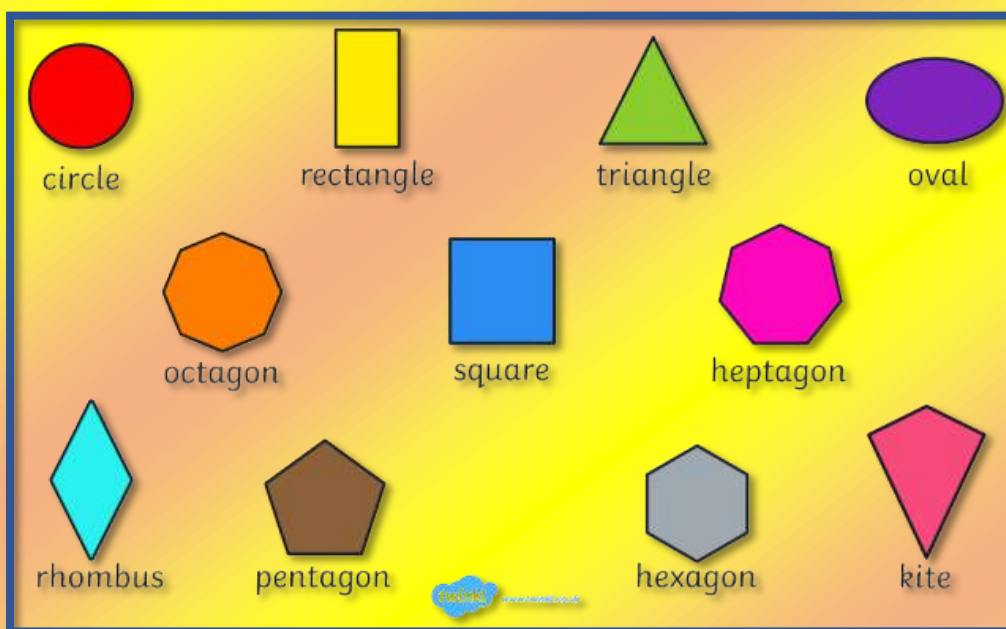
Column A	Column B
1. Dentist	a) Cancer
2. Paediatrician	b) Eye
3. Psychiatrist	c) Children
4. Optometrist	d) Skin
5. Cardiologist	e) Animals
6. Oncologist	f) Teeth
7. Dermatologist	g) Brain and nerves
8. Gastrologist	h) Digestive system
9. Neurologist	i) Heart
10. Veterinarian	j) Mental Health

**Q3: Write the full form of the following:**

- (a) MRI
- (b) ECG
- (c) ICU
- (d) HIV

## SHAPES

A 2-D shape has two dimensions- length and breadth.



## What are 2D shapes?

2D stands for two dimensional. Two dimensional shapes are flat and only have two dimensions length and width. They include square, rectangle, circle, triangle and more.

If a shape has two dimensions it means there are two ways it can be measured in space all 2D shapes can be measured by their Length and width or length and height but remember shapes that are 2D are completely flat for example the square below is a shape in 2D because its flat and has straight sides.

## 2D shapes in every day life

There are many examples in real life we can see for 2D shapes around us such

## 2D Geometric Shapes in Real Life



rectangle



square



triangle



hexagon



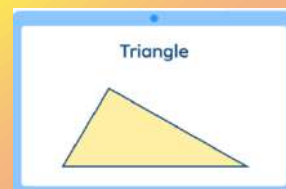
circle



octagon

YOUR  
DICTIONARY

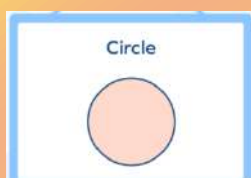
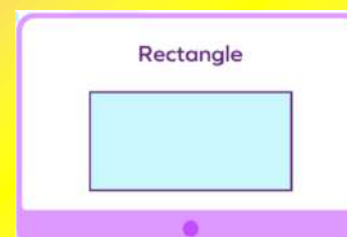
It has three straight sides, three angles, and three vertices.



It has four sides, four equal angles each measuring  $90^\circ$ .

It has four vertices.

It has four sides, four vertices, and four angles each measuring  $90^\circ$ . The opposite sides of the rectangle are equal in length and they are parallel.



It is made up of a curved line. It has no corners or edges. It is the set of all those points in a plane whose distance from a fixed point remains constant.

# TEST YOUR KNOWLEDGE

A) Write the name of following shapes



\_\_\_\_\_



\_\_\_\_\_



\_\_\_\_\_



\_\_\_\_\_

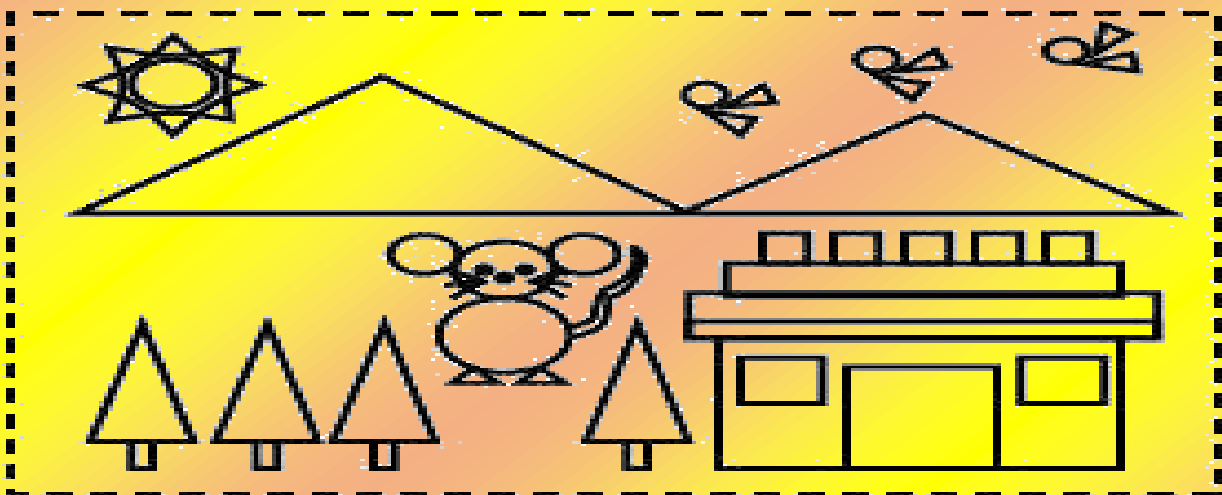
B) Fill ups

- 1) A triangle has \_\_\_\_\_ sides.
- 2) A triangle has \_\_\_\_\_ angles.
- 3) A square has \_\_\_\_\_ angles.
- 4) A circle has \_\_\_\_\_ sides.
- 5) A rectangle has \_\_\_\_\_ sides.
- 6) Pages of your maths copy is in the form of \_\_\_\_\_.

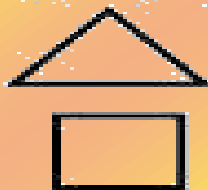
C) Write true or false

- 1) Each angle of rectangle is of  $90^\circ$ .
- 2) A circle has two sides.
- 3) A rectangle has three angles.
- 4) A scale is an example of rectangle.
- 5) 1 rupee's coin is an example of circle.

D) Count the different shapes and write the number of times it appears from the given below picture



Count the shapes in the above picture



Name the shape that occurs the most

\_\_\_\_\_

that occurs the least

\_\_\_\_\_

# INTERNET

The first computer network was developed in the united States by the defence services. It was designed to overcome network losses and not to survive a nuclear war as is commonly believed. This network was called ARPANet . The first permanent link was established in 1969.



\* There are over 5.47 billion active internet users.

As of February 2022, China has over 1 billion active users.

There are more than 1.98 billion websites online.

4.32 billion people use their mobile devices to go online.

● There are 198.4 million active websites on the web.





# AMAZING FACTS:

- 1 A single Google query uses 1,000 computers in 0.2 seconds to retrieve an answer.**
- 2 The term SURFING the internet was coined in 1992 by New York librarian Jean Armor Polly aka Net Mom**
- 4 Twitter has over 250 million users**
- 5 16% – 20% of the searches Google gets each day have never been Googled before**
- 6 The most popular Tumblr is the official updates page of Minecraft**
- 7 The most expensive keyword for Google Adwords is “Insurance” – \$54.91 Cost-Per-Click (according to WordStream)**
- 8 The Amazon logo indicates you can get everything from A to Z**
- 9 The first Spam Email was sent in 1978 over APARNET by a guy named Gary Thuerk**
- 10 500 million tweets are sent everyday**





# TEST YOUR KNOWLEDGE

Circle the correct answer to these questions

1. Which of these is not a search engine?

- (a) Google                      (b) Netscape                      (c) Yahoo

2. You have spam in your inbox. this means you have

- (a) SMS                      (b) important mail                      (c) junk e-mail

3. What is the address of a web page called?

- (a) URL                      (b) WWW                      (c) http

4. When you send something with your email it is called a (n)

- (a) file.                      (b) attachment.                      (c) notice

5. When files are too large to be sent over the net you

- (a) edit them                      (b) zip them                      (c) shorten them

6. What are web banners?

- (a) junk mail                      (b) web advertisement                      (C) special web page

7. What is cybercrime?

- (a) crime committed using the internet  
(b) stealing someone's computer  
(c) Having account under a different name

8. What is netiquette?

- (a) good rules of behaviour on the net  
(b) spell checking what you have written  
(C) internet crime

Write the full form of these:

- \* LCD - \_\_\_\_\_  
\* ISP - \_\_\_\_\_  
\* WWW. - \_\_\_\_\_  
\* URL - \_\_\_\_\_  
\* ROM - \_\_\_\_\_

\*Write the shortcut keys.

1. Center - \_\_\_\_\_  
2. Go to - \_\_\_\_\_  
3. Save - \_\_\_\_\_  
4. All select - \_\_\_\_\_

## FAMOUS INDIAN SPORTS - I

# CRICKET

- 1) Cricket is a game played with bat and ball having 11 players on each side of the two teams.
- 2) The person who hits the ball is called "Batsman", another person who bowls is called "Bowler".
- 3) The aim of the two teams is to restrict the opponent to fewer runs while bowling and make maximum runs while batting.
- 4) Before the start of the game a coin is tossed, with heads as winners and tails as losers of the toss, the winner of the toss decides either to bowl or bat first.
- 5) To give a batsman out there are two judges who stand on the field, they are called "Umpires".
- 6) There is a third umpire who sits outside the field to assist the field umpires while giving "Run- Out", "Leg Before Wicket" etc.
- 7) Match referee is also a part of this game who observes the moral conduct of the players in a match, and also punishes them for violation of rules.
- 8) The apex body which governs cricket in the whole world is the ICC (International Cricket Council).
- 9) Cricket matches are played in a ground having a rectangular clearing in the middle known as a pitch; its length is 20.12m or 22 yards in length and 10ft (3.05 meters) in width.
- 10) Three wickets on each end are placed on the pitch, and the batsman while batting has the responsibility to protect the wickets from falling.



# FOOT BALL

- 1) Football is an outdoor game which is most popular in the world.
- 2) Football is also called as "Soccer" in North America, South Africa and Australia.
- 3) The name football is a combination of two words, "Foot" and "Ball" where players run and kick a big ball from their foot.
- 4) Football is played between two teams and each team has 11 players in it and one of the players is a goalkeeper.



- 5) There is "Goal Post" constructed at the both ends of a big ground where a big net is tied with that goalpost.
- 6) Each player competes with his opponent and tries to kick the ball into opponent's goal post which is called as "Goal".
- 7) Two goalkeepers stand in front of their team's goal post in order to prevent the ball entering their goal post to save a goal.
- 8) There is a referee in football game who judges the goal scored by a player and also ensures that the game is played honestly.
- 9) The game of football is of 90 minutes with two sessions of 45 minutes each with a brake of 10 minutes.
- 10) In case of no goal or equal goals, extra time of 30 minutes and finally "Penalty Shootout" of 5 attempts is given to each team.

## KHO-KHO

- 1) Kho Kho is one of the most popular and traditional sports widely played in the Indian subcontinent.
- 2) Kho Kho is a sport that is played between two teams, in which each team comprises nine players.
- 3) Kho Kho is a sport where one team sits, and the other team runs and the runners and chaser's teams are selected by tossing a coin.
- 4) Each Kho Kho game is timed and is played in nine-minute innings with in between breaks of five minutes.
- 5) After a gap of five minutes, the teams exchange their position- the running team chases and the sitting team runs.
- 6) The pursuit is built up through a series of "khos" as the chasers continue their tracking in a relay manner.
- 7) The Kho Kho sport conducts both state and national level entry competitions.
- 8) Playing the sport, Kho Kho holds multiple health benefits as this game keeps our body healthy and agile.
- 9) This game is top-rated because it's gratifying and offers many thrills when one is dodged and feint.
- 10) Kho Kho is a fun, and a popular game played at school with teams from other classes, and it is a fun game to be involved in a group.



## HOCKEY

- 1) Hockey is the national sport of India.
- 2) This game is played in other countries besides India.
- 3) India has been a world champion in hockey.
- 4) This game started first from England.
- 5) Like cricket, also hockey was brought to India by the British.
- 6) In this game, players have to run continuously.
- 7) In this game too, like cricket, there are two teams.
- 8) Each team consists of 11 players.
- 9) But in this game, both teams are in the field during the play.
- 10) Dhyanchand was a brilliant hockey player who is called the hero of hockey.



# TEST YOUR KNOWLEDGE

## 1. Unscramble the following:

- |            |             |
|------------|-------------|
| A) EYKCOH  | F) EREFEER  |
| B) TEKCRIC | G) LOAG     |
| C) LBOWER  | H) LLBFOTAO |
| D) NAMSTAB | I) HYEKOC   |
| E) REIPMU  | J) HKOOHK   |

## 2. State whether 'True' or 'False':

- A) Football is an indoor game.
- B) Each football team has 11 players
- C) One goalkeeper takes care of both the goal posts.
- D) In football, an umpire judges the goal scored by a player and also ensures that the game is played honestly.
- E) Dhyanchand was a brilliant Hockey player.
- F) Both Hockey and Cricket were brought to India by the British.
- G) Khokho has nine players in each team
- H) The person who hits the cricket bowl is called the 'Bowler'.
- I) ICC is the apex body which governs Cricket in the whole world.
- J) Football is called Soccer in North America, South Africa and Australia.

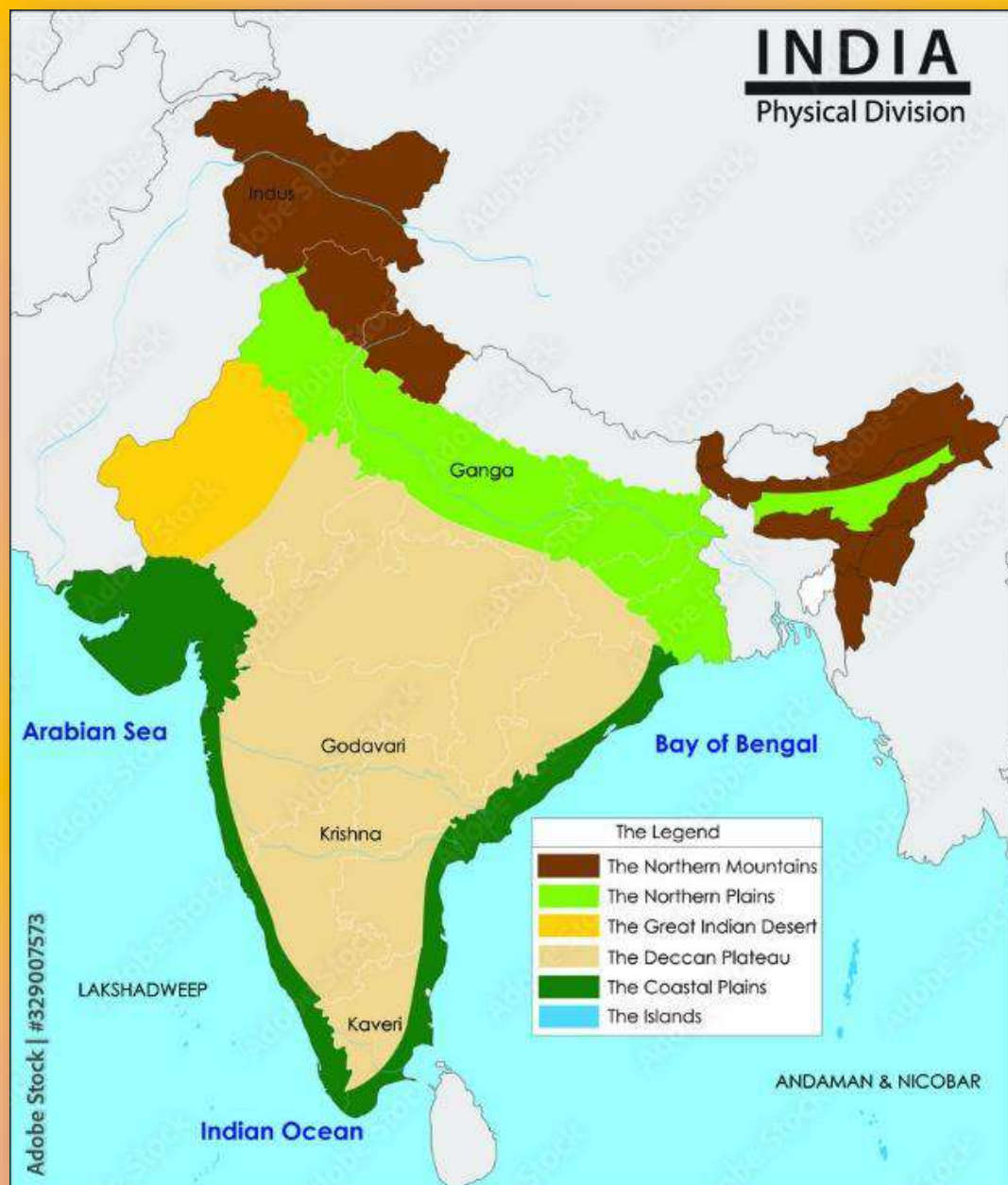
## 3. Fill in the blanks:

- A) \_\_\_\_ is the national sport of India.
- B) \_\_\_\_ game is timed and is played in nine minute innings, with in between breaks of five minutes.
- C) In Cricket, the person who bats is called \_\_\_\_
- D) The two judges who stand on the field when a Cricket match goes on are called \_\_\_\_.
- E) \_\_\_\_ wickets on each end are placed on the pitch.
- F) The name Football is a combination of two words \_\_\_\_ and \_\_\_\_.
- G) \_\_\_\_ is the sport where one team sits and the other team runs.
- H) Alike Cricket, in Hockey too, there are \_\_\_\_ teams and \_\_\_\_ players.
- I) A goalkeeper protects the \_\_\_\_.
- J) ICC stands for \_\_\_\_

# INDIA

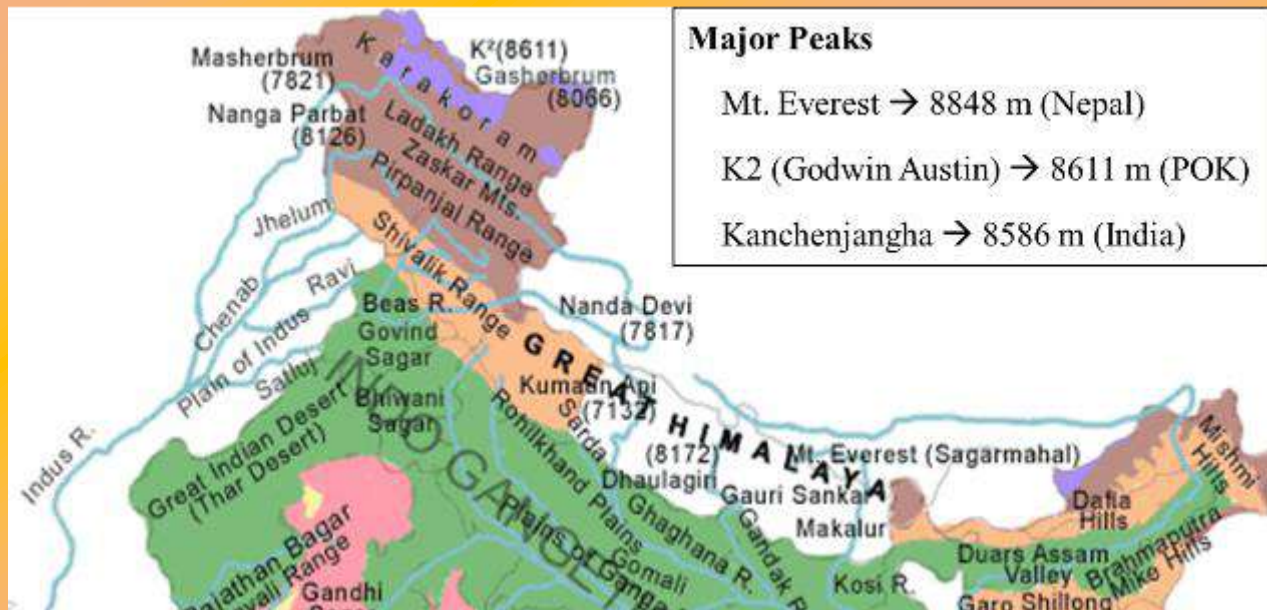
## PHYSICAL FEATURES - I

Physical Features are the natural features on the Earth's surface. They also have another name, which is "Landforms". Some of the examples of landforms are mountains, deserts, islands, plains, plateaus, canyons, valleys, rivers, oceans, glaciers, etc.



# THE NORTHERN MOUNTAINS

The northern mountains in the north of India extend from northwest to northeast of India. The Himalayas, the Karakoram mountains and the north-eastern. Mountain ranges are together called the Northern Mountains.



**They are divided into three main parallel ranges.**

- The northernmost is the Great Himalaya or Himadri. The world's highest peaks are located in this range.
- Middle Himalaya or Himachal is located to the south of Himadri.
- The Shivalik is the southernmost range.

## Northern Plains

The Northern plains are located in the south of the Himalayan mountains. This region covers the major part of northern India. It is a large flat area which extends from Punjab in the west to Assam in the east.



Indus, Ganga, and Brahmaputra, along with their tributaries, are the three principal river systems that have interacted to create the northern plain. 7 lakh square kilometres make up this plain. A densely inhabited physiographic division, the plain is approximately 2400 km long and 240 to 320 km wide.

## AMAZING FACTS

It stretches its area around 7 lakh sq. km.

- The plain is about 2400 km lengthwise and 240 to 320 km breadthwise.
- It is a densely populated physiographic division. ...
- With a rich soil cover equipped with an adequate water supply and favourable climate, it is agriculturally a productive part of India.

## TEST YOUR KNOWLEDGE

Q 1- Himalaya means the \_\_\_\_\_.

- a) abode of ice
- b) abode of water
- c) abode of soil
- d) none of these.

Q 2- How many parallel ranges do the Himalayas consist of?

- A) 2
- B) 4.
- C) 6.
- D) 3

Q 3 Himalayas are covered with \_\_\_\_\_.

- a) Mud.
- B ) Snow.
- C) Water.
- D ) Animals

Q4 Which of the following is the highest mountain peak of the world ?

- A) Mt Kanchenjunga
- B)Ñanda Devi
- C) Mt Everest.
- D) Nanga Parbat .

Q 5-Who was the first Indian woman to reach my. Everest?

- A) Junko Tabei
- b )Bachendri Pal
- C)Alison Hargreaves
- d) Melissa Arnot

Q 6-Which is the highest range of Himalayas?

- A) The Greater Himalayas
- b)The Lesser Himalayas
- C ) Middle Himalayas
- D) Shiwalik

**Answer the following questions;**

Q1-The region drained by the river and its tributaries. \_\_\_\_\_.

Q2-The largest delta in the world. \_\_\_\_\_.

Q3-The Glacier from which the Ganga rises. \_\_\_\_\_.

Q4-The place where Ganga and Yamuna meet. \_\_\_\_\_.

Q5- The soil of plains has been carried by \_\_\_\_\_.

Q6- Where is this picture is located?





PANCHSHEEL PUBLIC SCHOOL

# CURIOUS MINDS



36000 29145 2

CURIOUS MINDS