



PANCHSHEEL PUBLIC SCHOOL

10+2 Senior Secondary School (Affiliated & Recognized by CBSE)
Jaitpur, Badarpur, New Delhi-44

Annual Examination-2022-23

Time: **Subject: Science** **Class: VI** **M. Marks: 50**
Name..... **Roll No.....** **Section** **Date:**

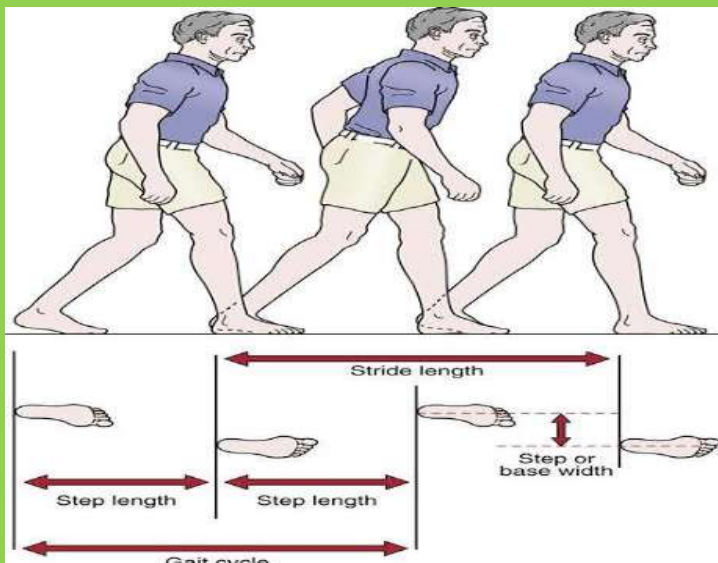
Q1. Choose the correct option. (1x5=5)

- Which of these acts as a shock absorber at the joints?
(a) Cartilage (b) ligaments (c) tendons (d) biceps.
- Which of these is the quickest source of energy?
(a) Sugars (b) starch (c) proteins (d) fats.
- Which of these plant has a tap root?



- (a) maize (b) grass (c) wheat (d) pea.

4. The foot step is an unreliable measure of length because:



- (a) People do not measure properly with it (b) It varies from person to person
(c) Some people jump too much while measuring with the footstep.
(d) It is a standard unit of measurement .

5. Which of these appliances in your house is not run by electricity?

- (a) Geyser (b) gas burner (c) air conditioner (d) music system

Q2. Fill in the blanks. (1x 4=4)

1. In a dry cell, the end with the metal cap is the _____ terminal.
2. _____ is the main part of the flower.
3. _____ is a disease caused due to the lack of vitamin C.
4. A pinhole camera forms an _____ image of an object on a screen.

Q3. State True or False. (1x4=4)

1. Plants respire only at night.
2. Current can only flow in a closed circuit.
3. A beam of light consists of several rays.
4. A child has more bones than an adult.

Q4. Define the following terms. (Do any 3) (1x3=3)

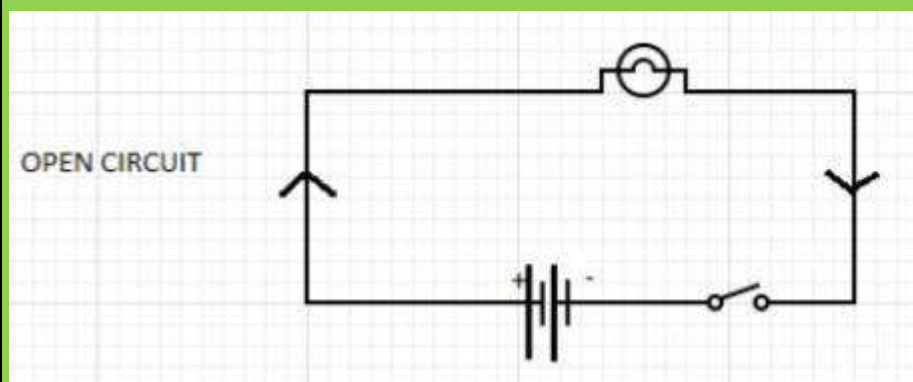
1. Tissue
2. Humidity
3. Deficiency diseases
4. Reflection

Q5. Differentiate between the following. (Do any 2) (2x3=6)

1. Conductors and Insulators.
2. Endoskeleton and Exoskeleton.
3. Image and Shadow.

Q6. Give reason for the following. (1x3=3)

1. Why is bone marrow important?
2. Why do plants require nitrogen?



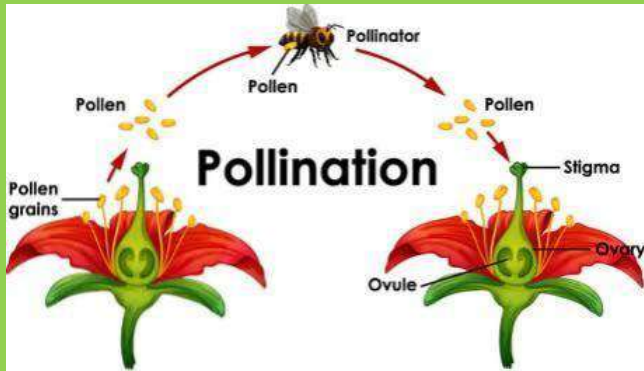
3. Why can electricity not flow in an open circuit?

Q7. Very short answer questions. (1x3=3)

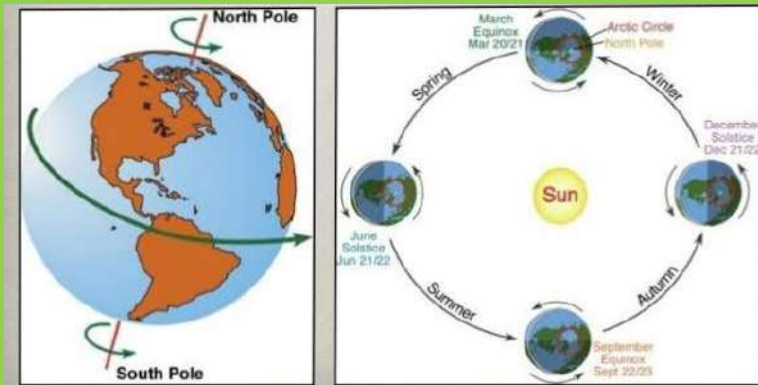
1. What is an electric circuit?
2. What is the standard unit of length in the SI system?
3. Can a completely transparent object cast a shadow?

Q8. Short answer questions. (Do any 3)

(2x3=6)



1. What is pollination?
2. Name the two kinds of motion that the earth has.

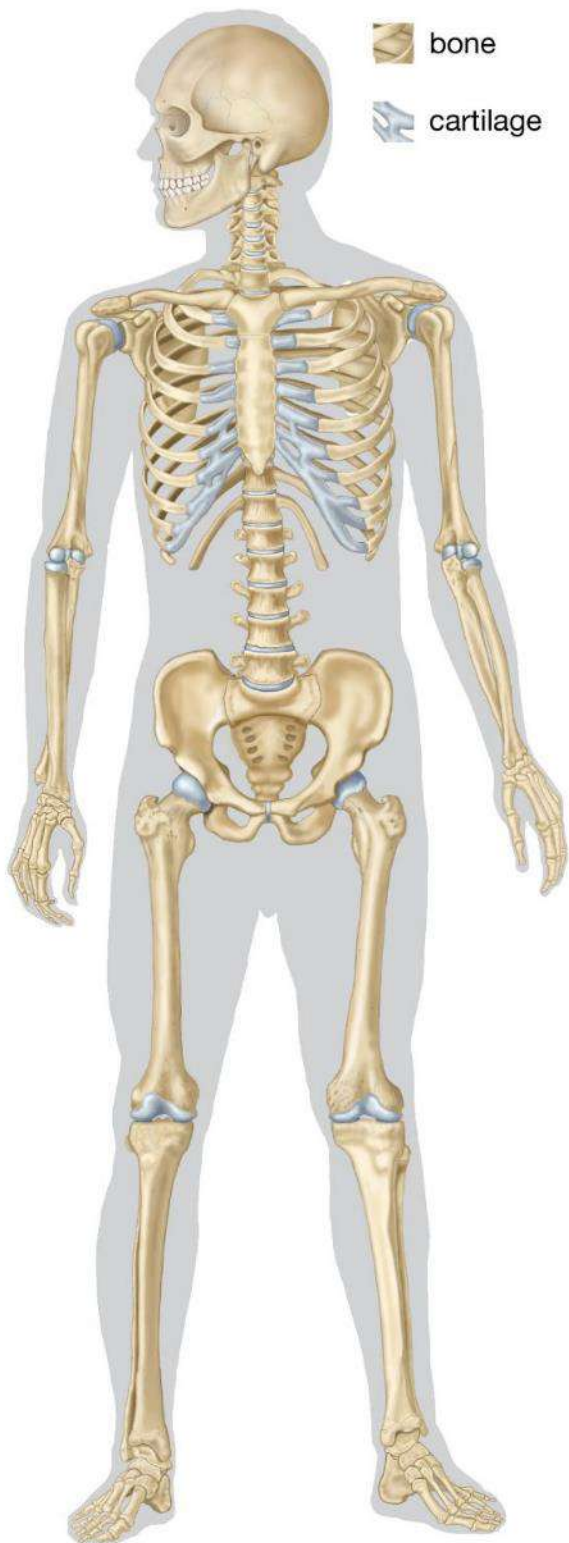


3. What is meant by rectilinear propagation of light?
4. When is an electric circuit said to be closed?

Q9. Long answer questions. (Do any 3)

(3x3=9)

1. List three properties of a shadow.
2. List the main functions of the human skeleton?



©

© Encyclopædia Britannica, Inc.

3. Why is it considered unhealthy to breathe in through the mouth ?
4. Explain the importance of the following vitamins for the body:
 - (a) Vitamin A
 - (b) Vitamin C
 - (c) Vitamin D

Q10. HOTS questions. (Do any 2)

(2x2=4)

1. What do you think would have happened if the backbone had only one long bone instead of many vertebrae?
2. Why do you think electric wires are made out of copper or aluminium though silver is a better conductor of electricity?
3. What will be the colour of a shadow formed in red light?



Q11. Draw the diagram of an electric circuit using symbols of components and label them. (1x3=3)

OR

Draw a diagram to show the eclipse of the Sun.